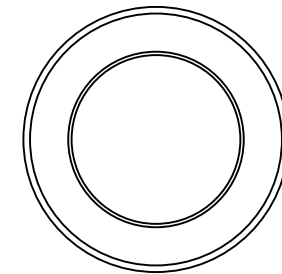
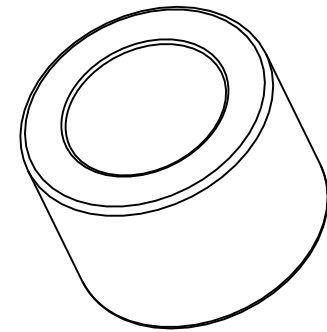


SECTION A-A



All dimensions in inches

NOTE1: Impregnated with 100 Grade R&O turbine oil unless otherwise specified

NOTE2: Typical PM Chamfers All Corners

MATERIAL:  
 CT-1000-K26 (SAE 841)  
 Sintered Bronze

DRAWING NOT TO SCALE

**SYMMCO INC.**  
 Bronze Sleeve Bearing  
**SS-1422-8**  
 7/16 ID 11/16 OD 1/2 LEN