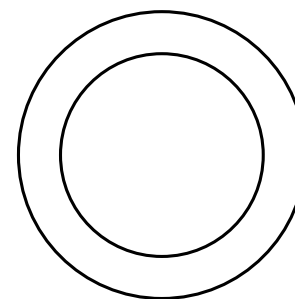
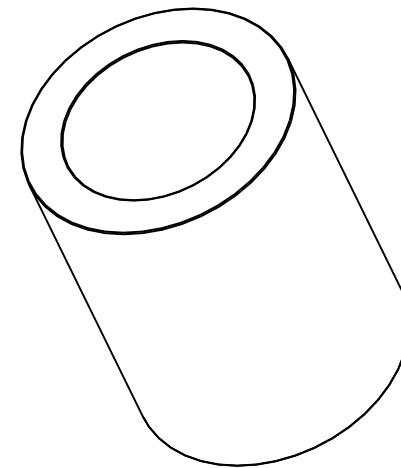


SECTION A-A



All dimensions in inches

NOTE 1: Impregnated with 100 Grade R&O turbine oil unless otherwise specified

NOTE 2: Bars will finish to dimensions shown

MATERIAL:

CT-1000-K26 (SAE 841)  
Sintered Bronze

DRAWING NOT TO SCALE

**SYMMCO INC.**

Bronze Cored Bar Stock

**SCS-2840-6**

3-1/2 ID X 5 OD X 6-1/2 LEN