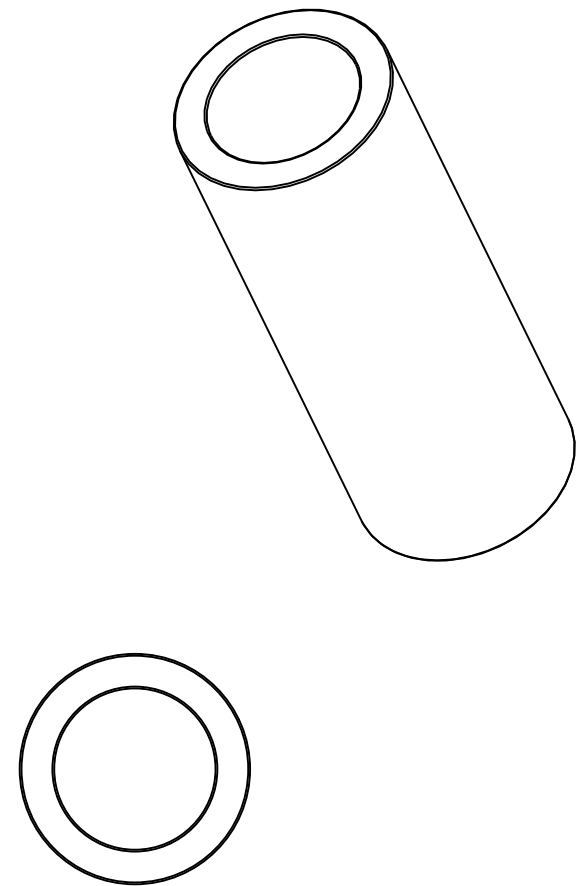


SECTION A-A



All dimensions in inches

NOTE 1: Impregnated with 100 Grade R&O turbine oil unless otherwise specified

NOTE 2: Bars will finish to dimensions shown

MATERIAL:  
 CT-1000-K26 (SAE 841)  
 Sintered Bronze

DRAWING NOT TO SCALE

**SYMMCO INC.**  
 Bronze Cored Bar Stock  
**SCS-1420-6**  
 1-3/4 ID X 2-1/2 OD X 6-1/2 LEN